

How to add DS-K1T502DBWX-C to NVR

Purpose:

Get liveview or record the video from DS-K1T502DBWX-C on NVR.

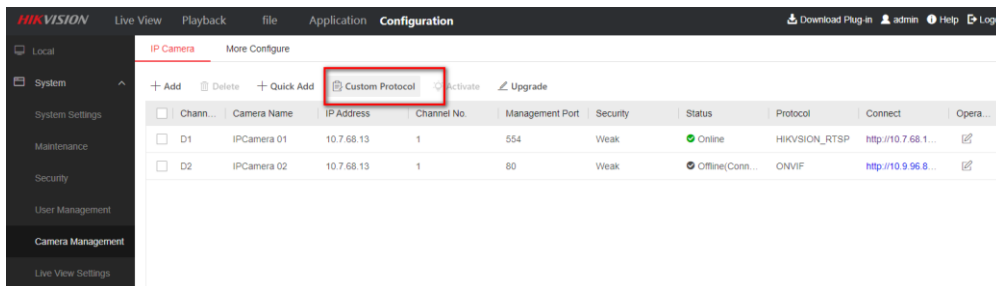
Device List:

DS-K1T502DBWX-C V1.7.1 220719

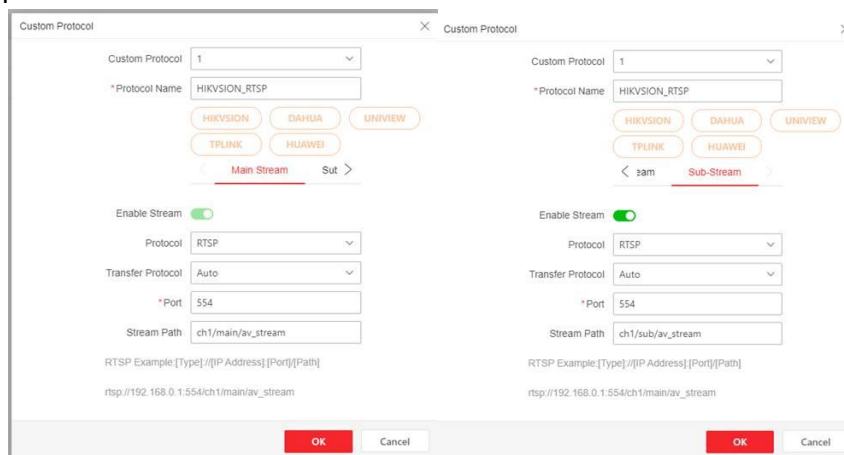
DS-9664NI-I16 V4.61.020 build 220708

Steps:

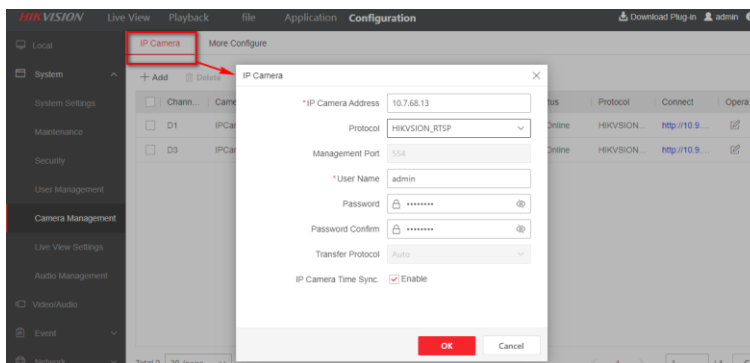
1. Login NVR web configuration page, and go to Configuration-> Camera Management-> IP Camera-> Custom Protocol, Single Click



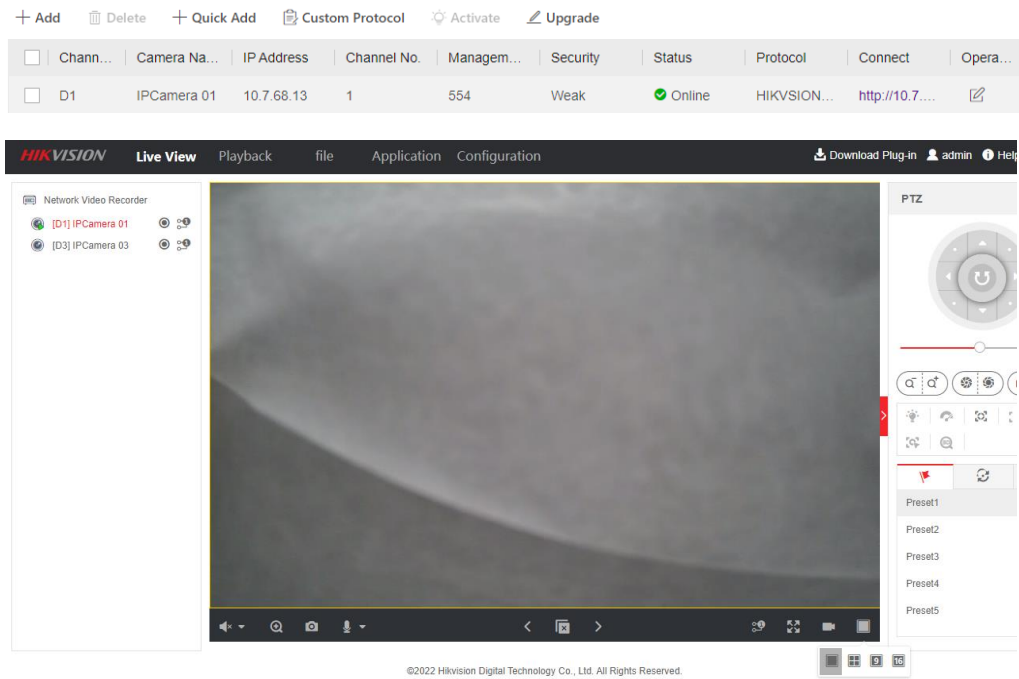
2. Input the custom protocol name and corresponding information as below in the pop up menu:



3. Back to the IP camera page, click Add and select the custom protocol HIKVISIH-RTSP and input the corresponding information, click OK



4. When the status shows online, you can get LiveView or set recording schedule for this channel



Test on 26-Sep 2022