

<b>Title:</b>	New Secure Activation Process for DVRs/NVRs	<b>Version:</b>	1.0	<b>Date:</b>	4/8/16
<b>Product:</b>	All Hikvision DVRs/NVRs/IP Cameras				
<b>Action Required:</b>	None, Information only				

**Summary:**

To ensure the highest level of protection, as well as to provide more compatibility and stability, Hikvision has introduced a new version of the well-known SADP software. To avoid any compatibility or functionality issues, it is recommended to upgrade to the newest version of the software. With the new and improved interface of the SADP software, the password reset procedure has taken a slightly new shape.

**Procedure:**

Click on the link below to download the latest version of the SADP software:  
[http://overseas.hikvision.com/us/Tools\\_82.html#prettyPhoto\[jframes77\]/1/](http://overseas.hikvision.com/us/Tools_82.html#prettyPhoto[jframes77]/1/)

After downloading the software, launch the installation wizard to complete the installation process. It is recommended to disable the computer’s antivirus software before launching the SADP software.

To reset a device’s password, launch the SADP software, which will locate all Hikvision devices on the network (Figure 1).

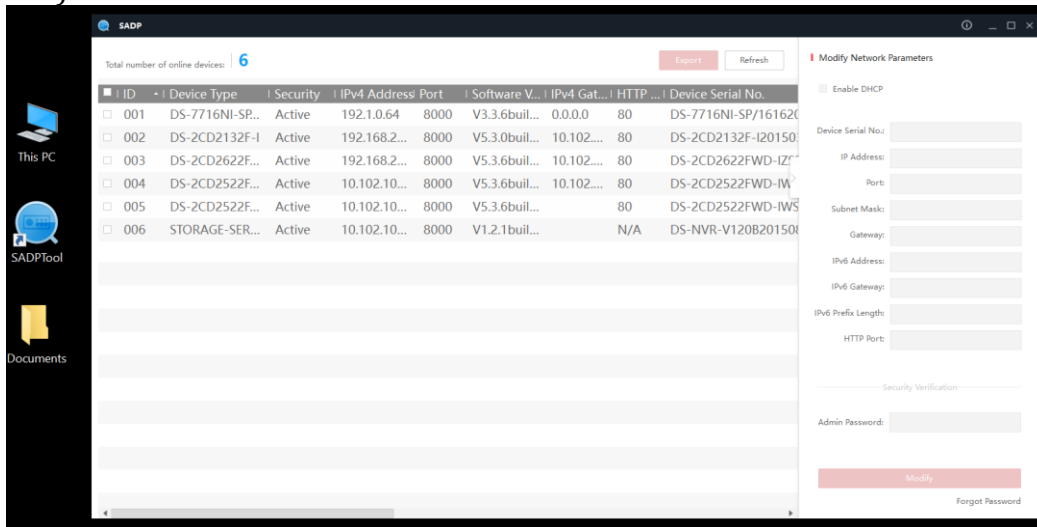


Figure 1

After the devices are detected and populated in a list (in no particular order), select the device, by checking the checkbox to its right, and press the **Forgot Password** option on the bottom-right corner of the user interface (Figure 2).

<b>Title:</b>	New Secure Activation Process for DVRs/NVRs	<b>Version:</b>	1.0	<b>Date:</b>	4/8/16
<b>Product:</b>	All Hikvision DVRs/NVRs/IP Cameras				
<b>Action Required:</b>	None, Information only				

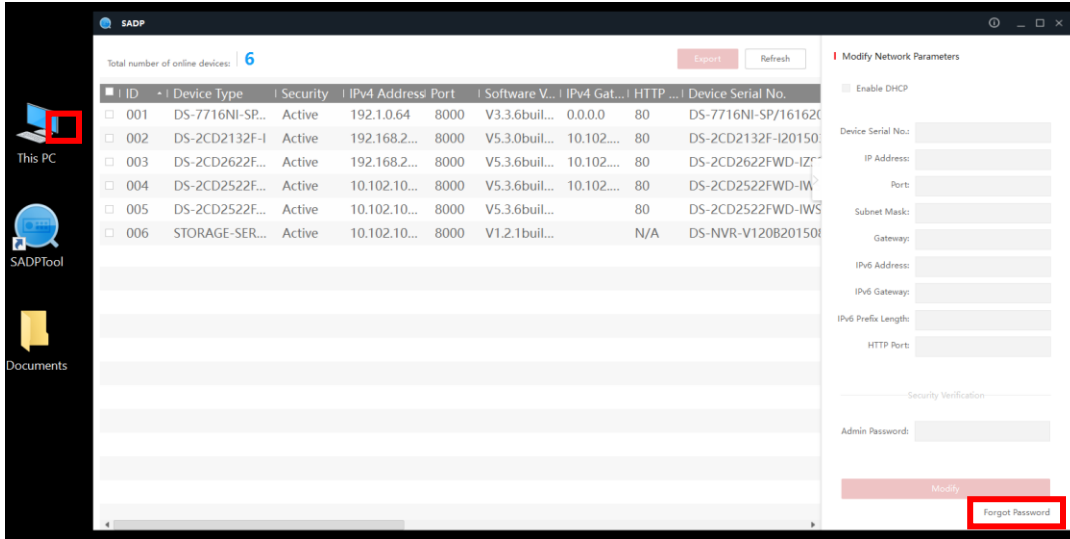


Figure 2

A pop-up window containing instructions will appear (Figure 3).

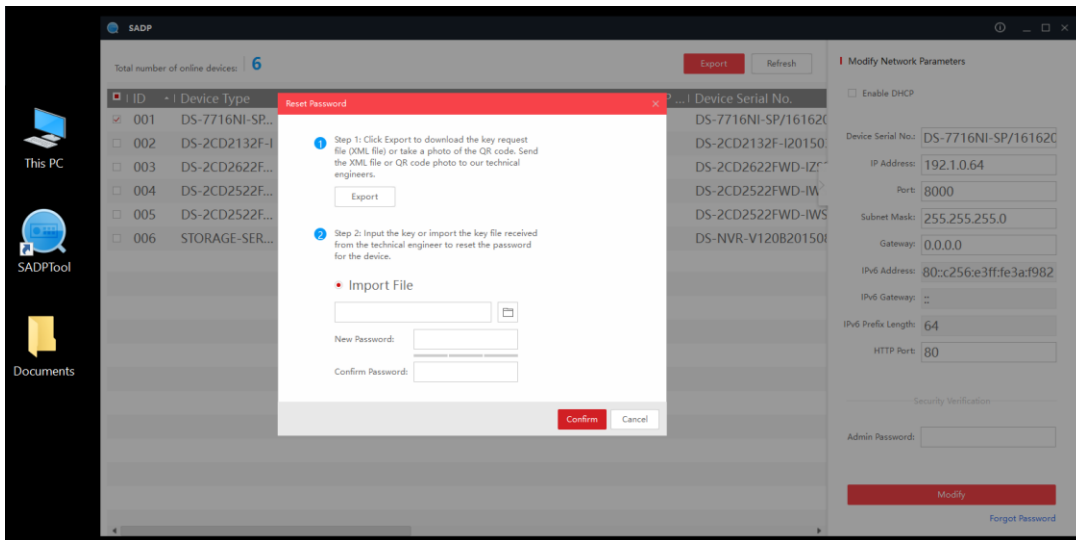


Figure 3

Press the **EXPORT** button to export the password reset key (Figure 4).

<b>Title:</b>	New Secure Activation Process for DVRs/NVRs	<b>Version:</b>	1.0	<b>Date:</b>	4/8/16
<b>Product:</b>	All Hikvision DVRs/NVRs/IP Cameras				
<b>Action Required:</b>	None, Information only				

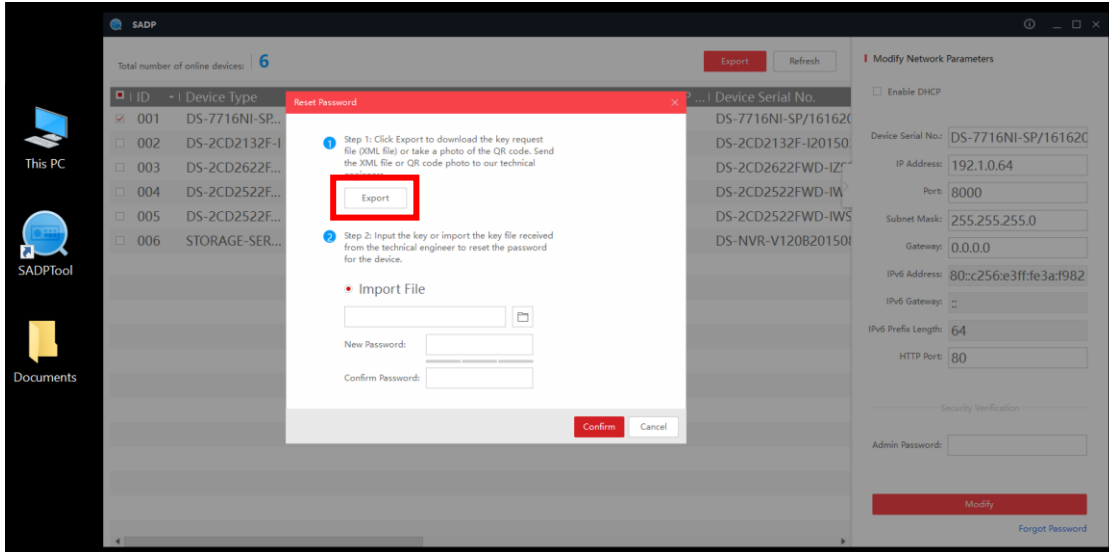


Figure 4

After pressing the **EXPORT** button a new **SELECT FOLDER** window will appear. For ease of use, select **DESKTOP** as the export directory and click on the **Select Folder** button on the bottom (Figure 5).

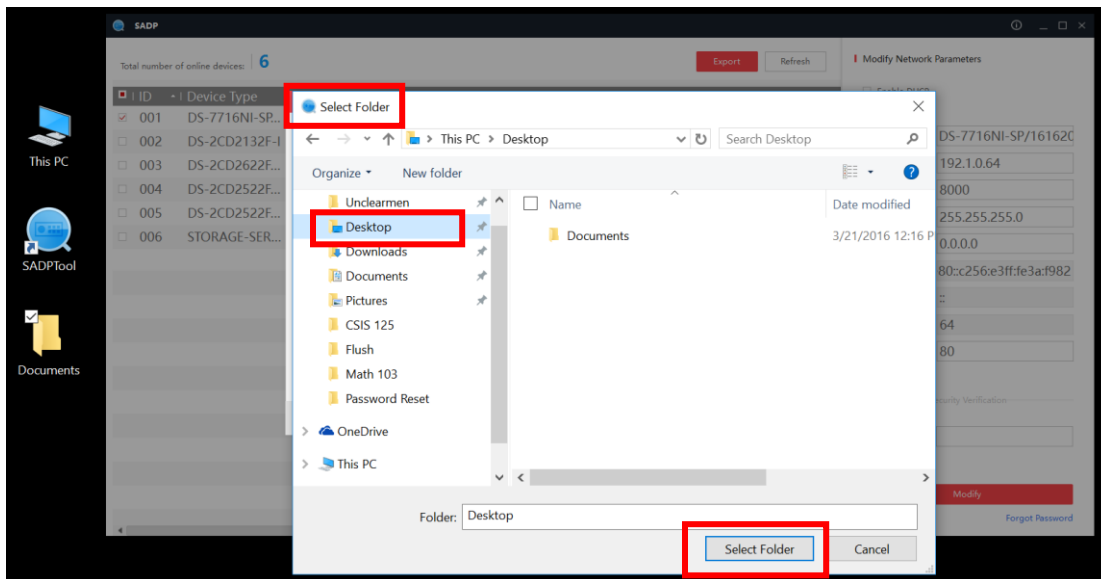


Figure 5

<b>Title:</b>	New Secure Activation Process for DVRs/NVRs	<b>Version:</b>	1.0	<b>Date:</b>	4/8/16
<b>Product:</b>	All Hikvision DVRs/NVRs/IP Cameras				
<b>Action Required:</b>	None, Information only				

A success message will appear (Figure 6).

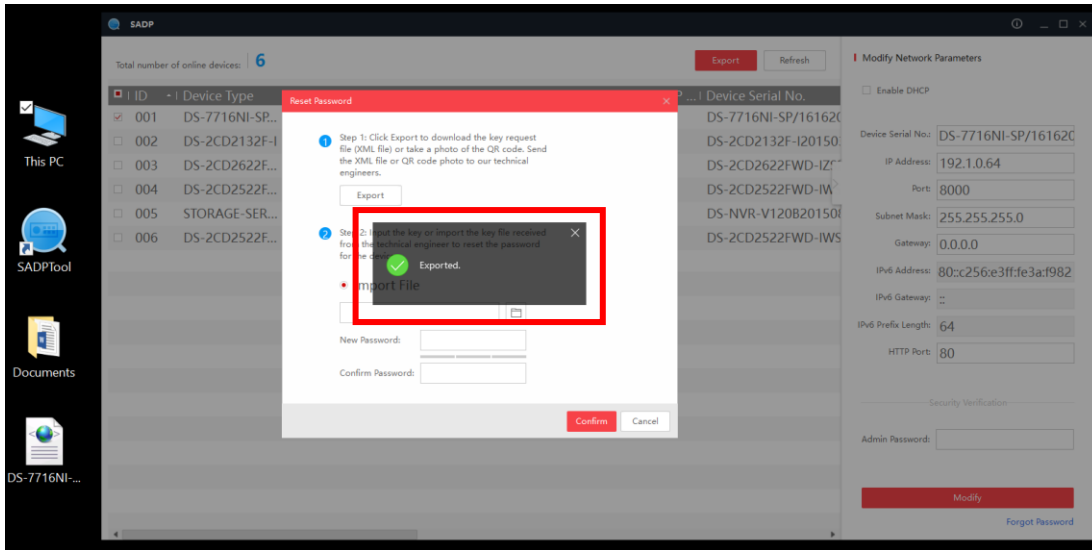


Figure 6

After the file has been exported, it can be easily located on the desktop (Figure 7).

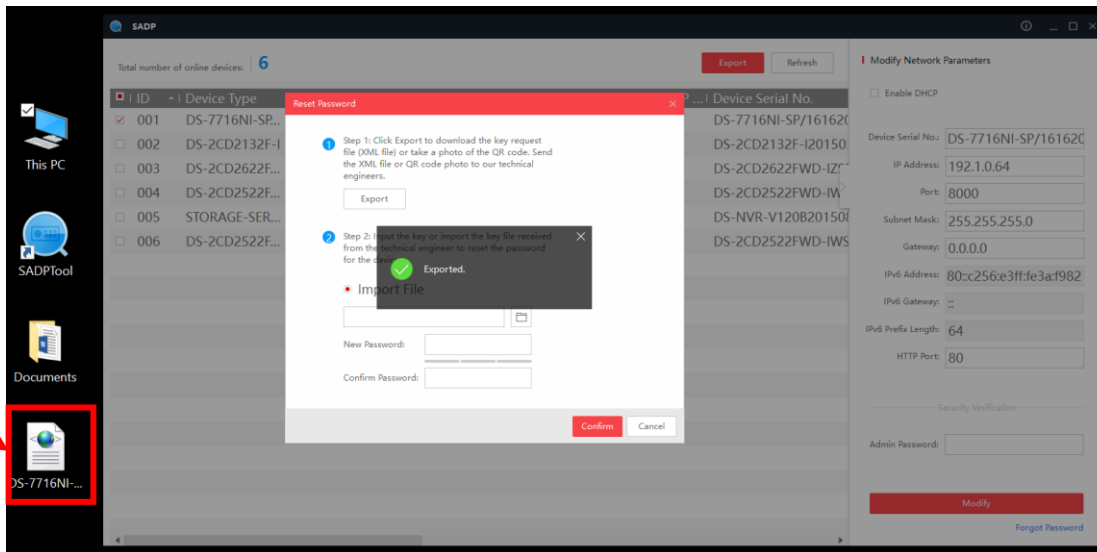


Figure 7

After locating the reset file on the desktop, email it to [techsupport.usa@hikvision.com](mailto:techsupport.usa@hikvision.com). Please allow an hour to receive a reply during normal business hours (Mon-Fri 6AM-6PM PST). If the email was sent outside of normal business hours, the reply will be sent on the next business day.

<b>Title:</b>	New Secure Activation Process for DVRs/NVRs	<b>Version:</b>	1.0	<b>Date:</b>	4/8/16
<b>Product:</b>	All Hikvision DVRs/NVRs/IP Cameras				
<b>Action Required:</b>	None, Information only				

The reply from the technical support team will contain a reset file, generally called **ENCRYPT** (the file may have an altered name, if files for multiple devices are being sent). Upon receiving the reset file download it to the DESKTOP (for ease of access) (Figure 8). **Please note, the reset file is good for 2 calendar days, and during those days the device for which the reset file has been generated cannot be rebooted or powered down.**

To finalize the reset procedure, the reset file will need to be “imported” into the device, along with a new password (remember, there is no default password to reset to). To “import” the reset file, click on the button with a **FOLDER ICON** (Figure 8).

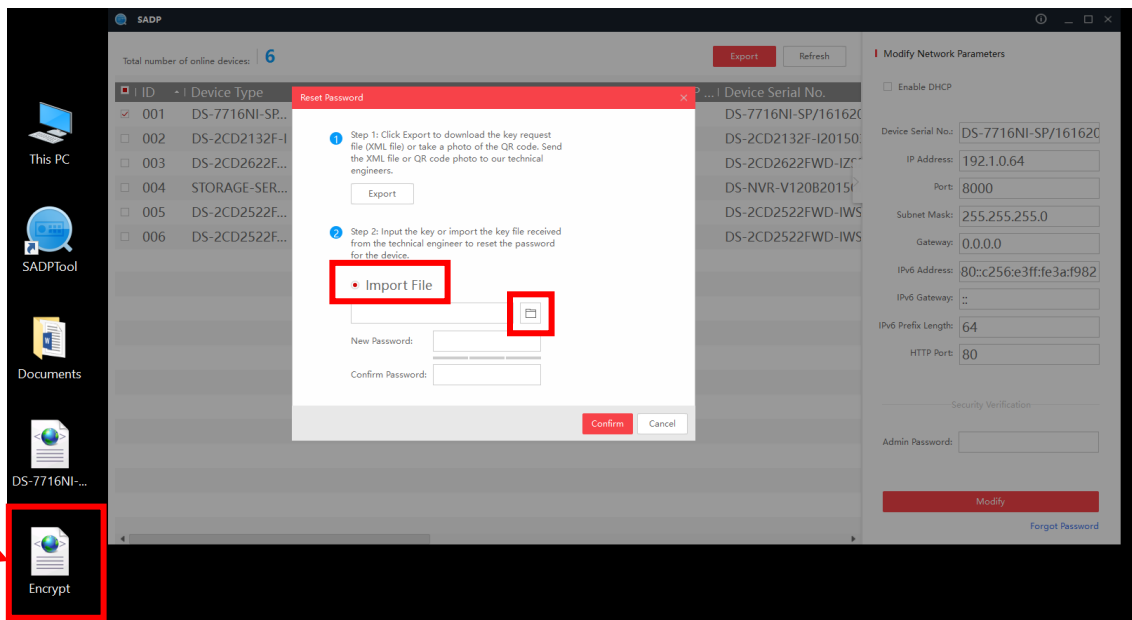


Figure 8

A new **OPEN** window will appear. Select DESKTOP as an import directory and select the reset file and click on the **OPEN** button (Figure 9).

<b>Title:</b>	New Secure Activation Process for DVRs/NVRs	<b>Version:</b>	1.0	<b>Date:</b>	4/8/16
<b>Product:</b>	All Hikvision DVRs/NVRs/IP Cameras				
<b>Action Required:</b>	None, Information only				

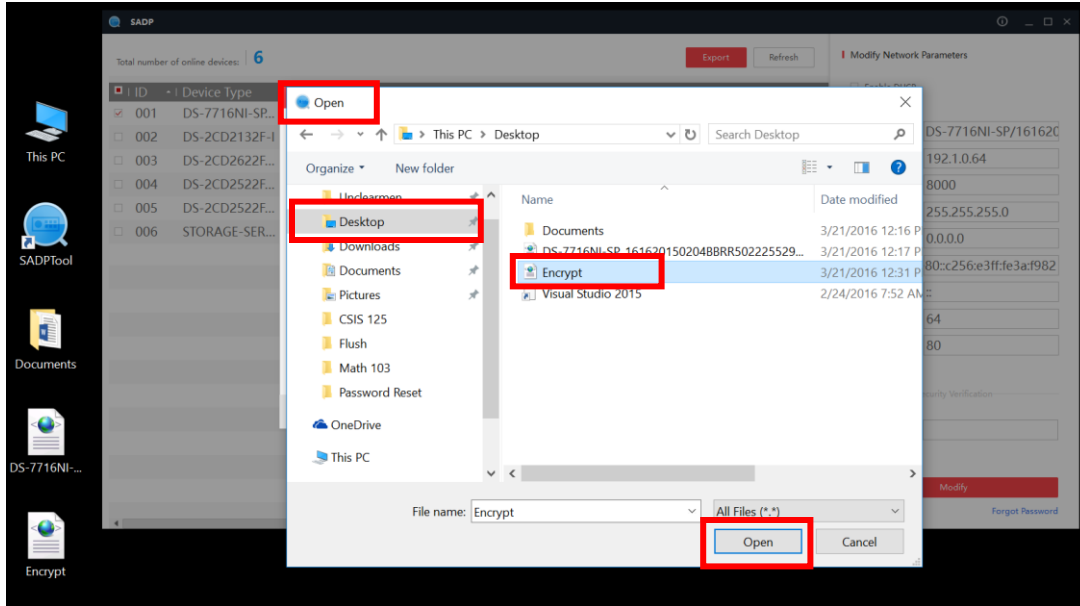


Figure 9

After clicking OPEN, type the new password into the **NEW PASSWORD** field, then confirm the password by re-typing the password into the **CONFIRM PASSWORD** field. press **CONFIRM** (Figures 10 and 11).

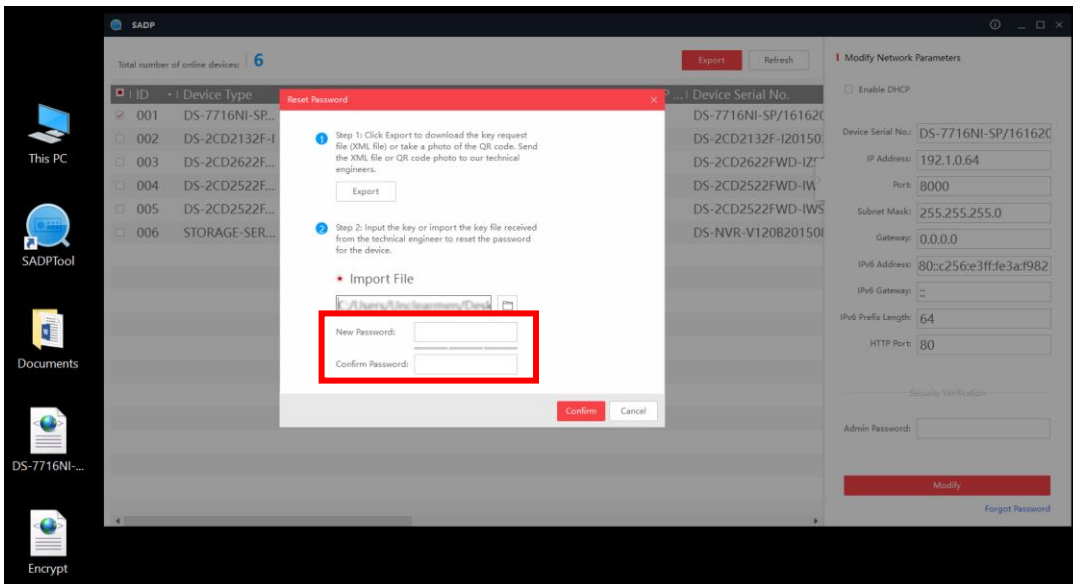


Figure 10

<b>Title:</b>	New Secure Activation Process for DVRs/NVRs	<b>Version:</b>	1.0	<b>Date:</b>	4/8/16
<b>Product:</b>	All Hikvision DVRs/NVRs/IP Cameras				
<b>Action Required:</b>	None, Information only				

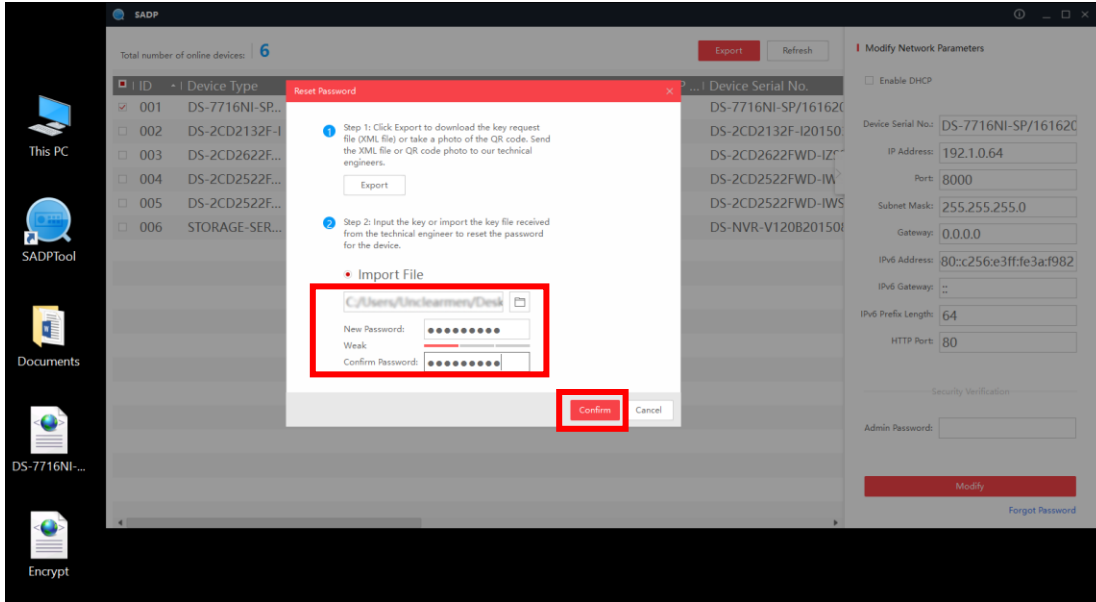


Figure 11

A success message will appear notifying about a successful password recovery (Figure 12).

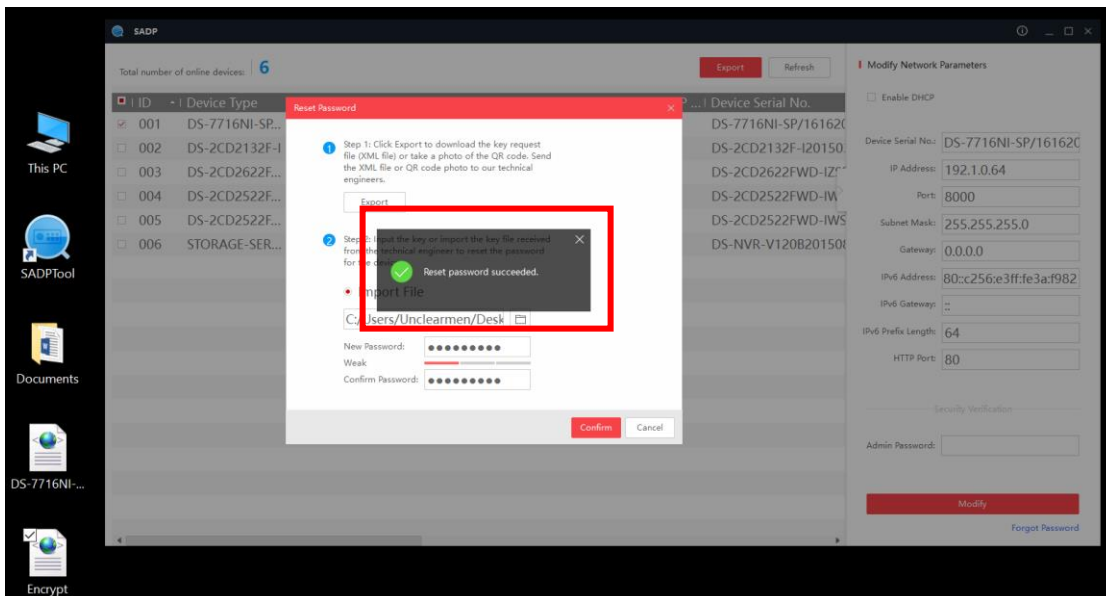


Figure 12

The new SADP software is also backwards compatible. Passwords of units with firmware versions prior to the secure activation firmware, or units not affected by the secure activation can also be reset with the new version of SADP software.

<b>Title:</b>	New Secure Activation Process for DVRs/NVRs	<b>Version:</b>	1.0	<b>Date:</b>	4/8/16
<b>Product:</b>	All Hikvision DVRs/NVRs/IP Cameras				
<b>Action Required:</b>	None, Information only				

Select the unit the password of which needs to be reset. Drag the slider, on the bottom of the screen, to the right to reveal the serial number of the device (Figure 13).

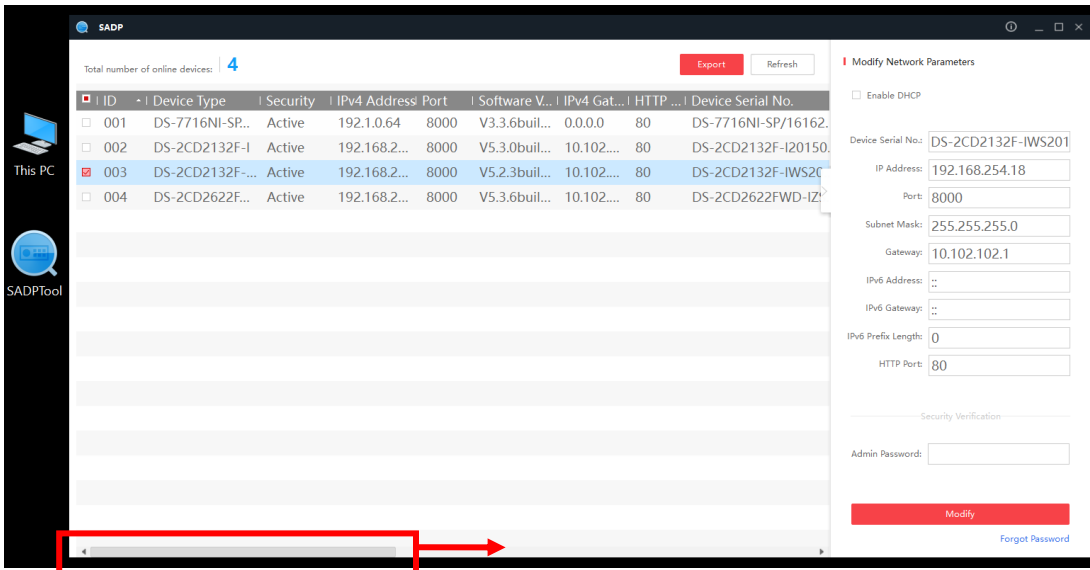


Figure 13

After revealing the serial number, there might be a need to expand the serial number field to expose the complete serial number, and not just a part of it, click on and drag the border of the serial number field to the left (Figure 14 and 15).

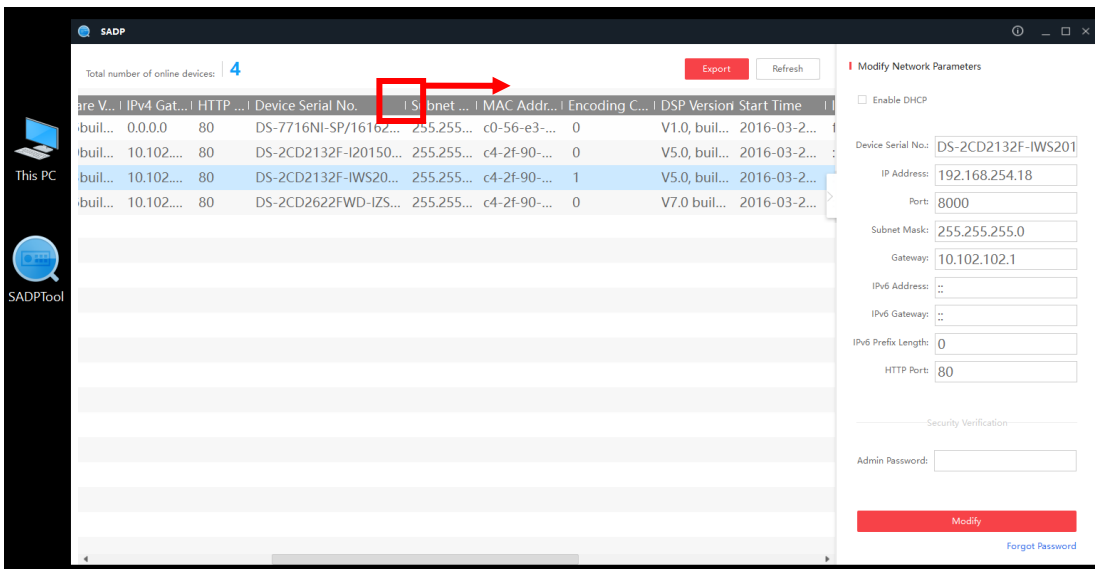


Figure 14



<b>Title:</b>	New Secure Activation Process for DVRs/NVRs	<b>Version:</b>	1.0	<b>Date:</b>	4/8/16
<b>Product:</b>	All Hikvision DVRs/NVRs/IP Cameras				
<b>Action Required:</b>	None, Information only				

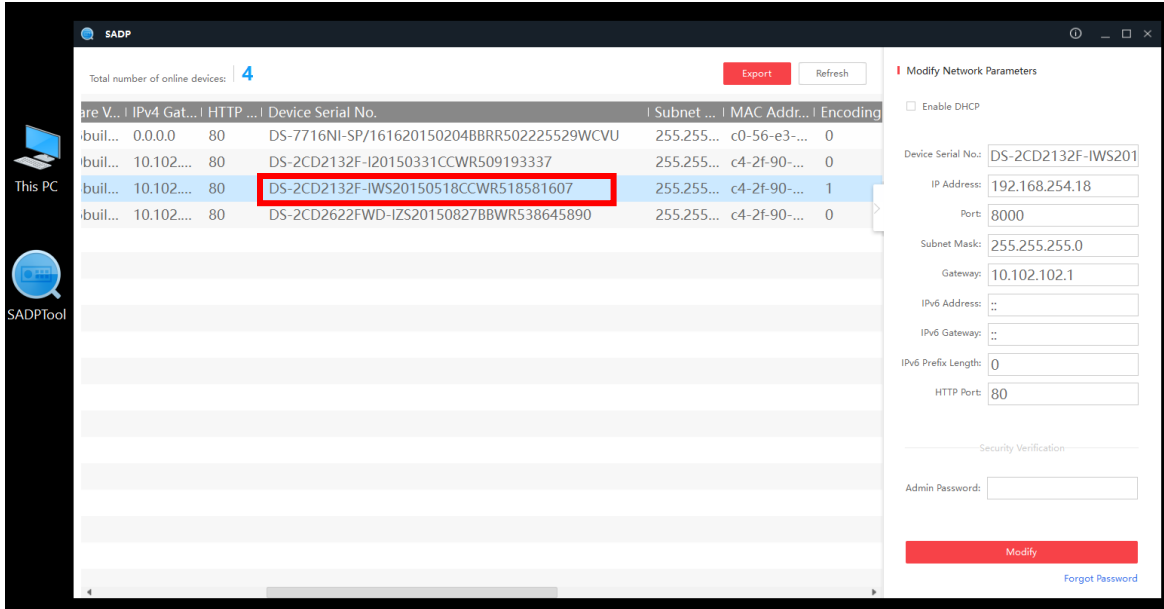


Figure 14

After revealing the complete serial number, email the serial number to [techsupport.usa@hikvision.com](mailto:techsupport.usa@hikvision.com). The technical support team will email **SECURE CODES**, which will be used to reset the password. The codes will be good for 5 calendar days. After receiving the codes in an email from the technical support team, press the **Forgot Password** option on the bottom right corner of the user interface (Figure 2). A **Restore Default Password** window will appear. Enter one of the codes in the **Security Code** field and click **Confirm** (Figure 15).

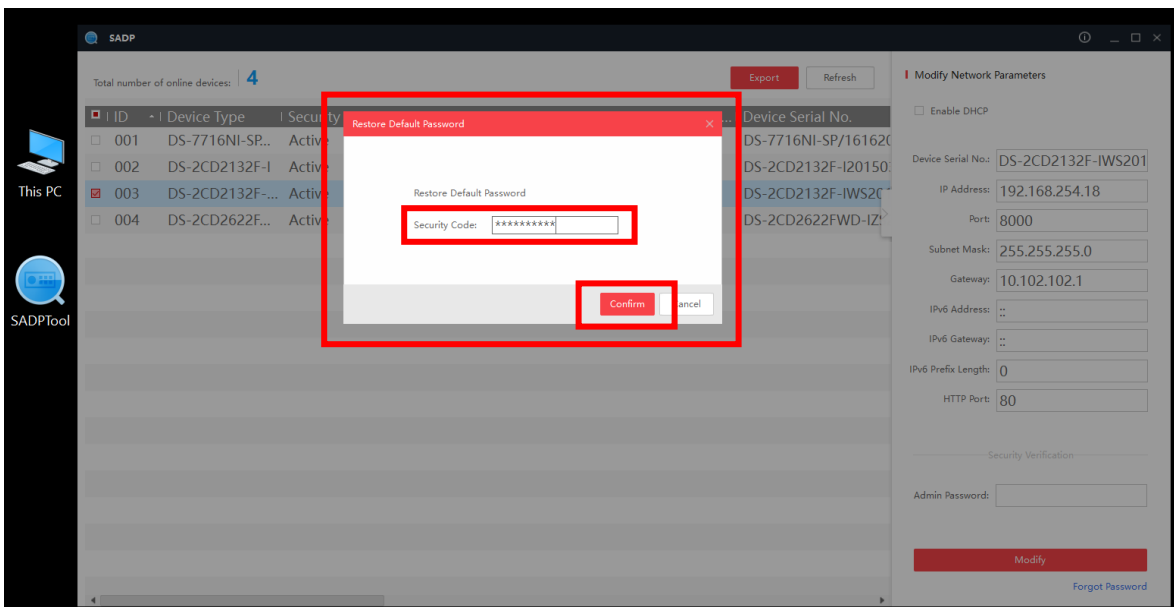


Figure 15

<b>Title:</b>	New Secure Activation Process for DVRs/NVRs	<b>Version:</b>	1.0	<b>Date:</b>	4/8/16
<b>Product:</b>	All Hikvision DVRs/NVRs/IP Cameras				
<b>Action Required:</b>	None, Information only				

A success message will appear notifying about a successful password recovery (Figure 16).

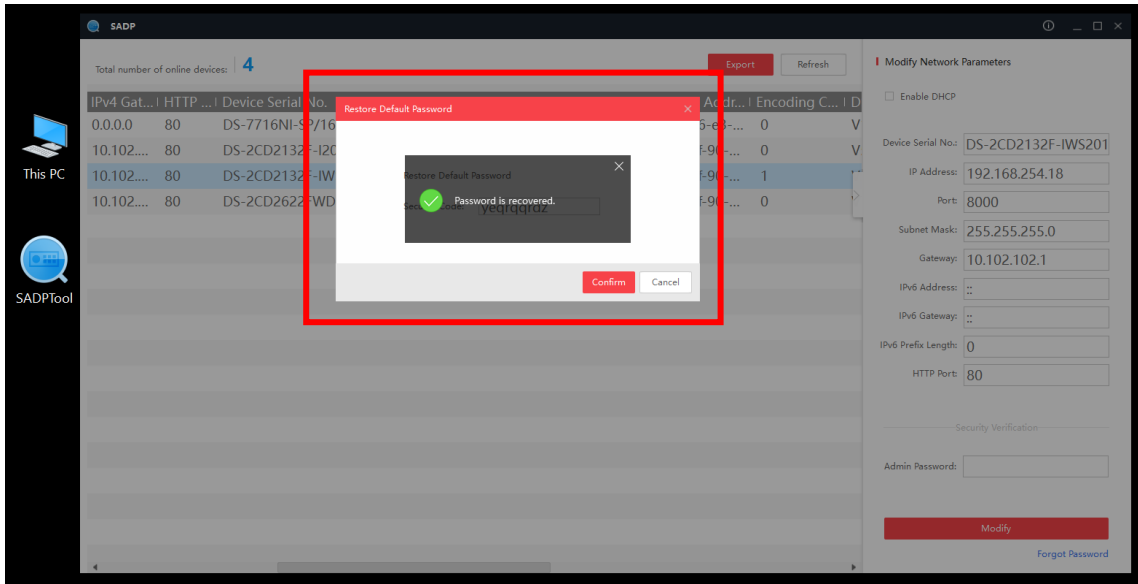


Figure 16