

Hikvision X-ray Baggage & Parcel Inspection Systems

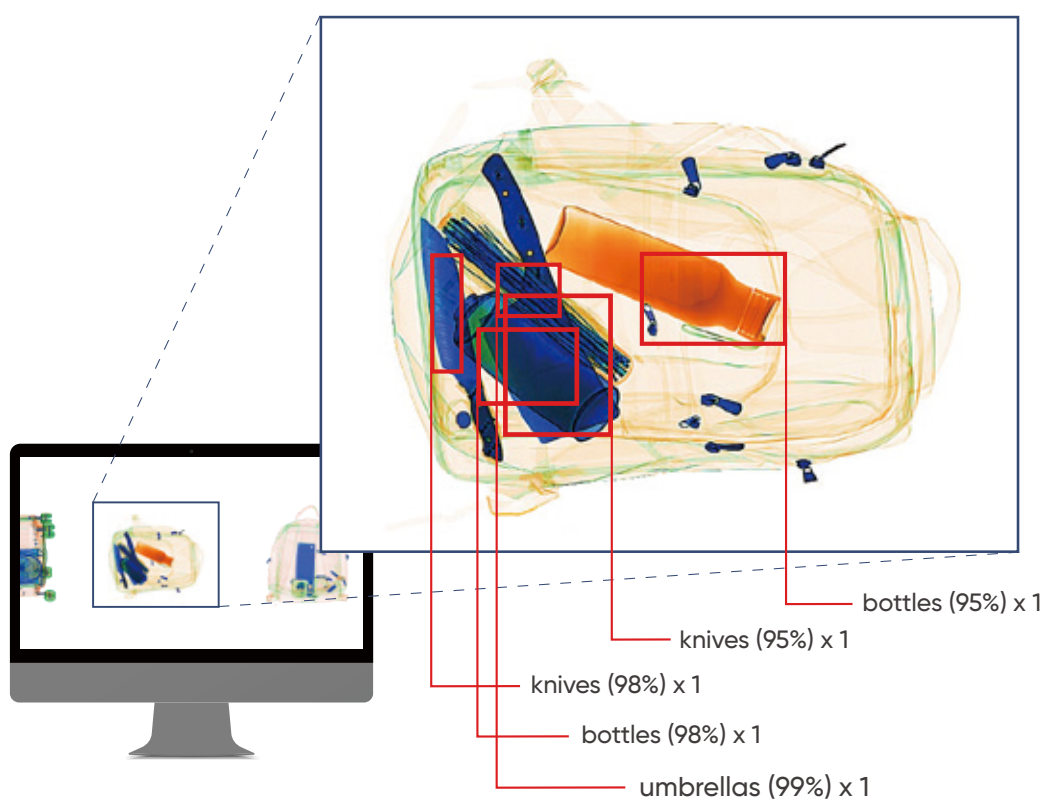
Detecting real threats in real time

HIKVISION[®]



Modern security requires quick and accurate detection of real threats in even the toughest environments. In large areas with massive amounts of foot traffic, such as public transport and logistics areas, baggage and parcel inspections are a daily requirement. And those inspections must provide reliable results in the moment as part of a complete security package. It's a critical job. And Hikvision can help.

Hikvision's AI-based X-ray Baggage & Parcel Inspection Systems are versatile, designed to suit a variety of screening scenarios. The Systems utilize robust & fast algorithms from assisting operators to identifying potential threats and prohibited items during scanning. With sharp X-ray imaging integrated into a video monitoring system, Hikvision's X-Ray screening products deliver advanced performance for today and long into the future.



AI-based threat identification provides higher throughput

Hikvision's system accurately detects a wide range of prohibited items up to 41 classes and 15 major types. It greatly reduces pressures on personnel and saves time with higher screening efficiency.



Networking and electronic reports enhance response

The system enables remote management via HikCentral Professional, with in-depth analysis of events and data uploading.



X-Rays integrate with video monitoring for easy event tracing

Dual imaging combines X-Ray and CCTV footage with generated reports.



Go the next step with new Raytina image enhancement technology

Raytina technology captures clearer details with important information.



5030 series

- Single-energy
- Multi-energy



Maximum Performance

- Detects 41 classes and 15 major types of prohibited items
- 21.5-inch display delivers outstanding image quality with full 1920x1080 HD resolution
- Double lead-curtain design effectively keeps surrounding staff and other personnel safe from radiation

Ease-of-use

- Code / fingerprint / facial access (optional) to quickly log in and start up
- Flat, 0.6 m carrier tables at exit (included) and entrance (optional) for rapid pass-through of belongs
- Quick operation with an embedded operator training system

Application Scenarios

Amusement Parks





Schools



Hospitals



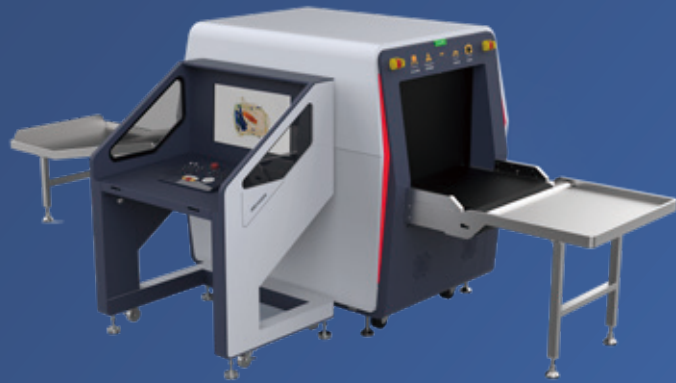
More
...

Model	ISD-SC5030SA-2CL Single-energy	ISD-SC5030S-2CVL Multi-energy
Image		
Tunnel Size	500 mm (W) × 300 mm (H)	500 mm (W) × 300 mm (H)
Dimensions	1250 mm × 650 mm × 690 mm (L x W x H)	1586 mm × 1160 mm × 760 mm (L x W x H)
Operation Desk Size	/	/
Wire Resolution	36 AWG standard, 38 AWG typical	36 AWG standard, 38 AWG typical
Steel Penetration	6 mm standard, 8 mm typical	27 mm standard, 30 mm typical
Spatial Resolution	1.0 mm (Horizontal & vertical)	1.0 mm (Horizontal & vertical)
X-Ray Generator	80 kV, 0.6 mA (Adjustable)	140 kV, 0.8 mA (Adjustable)
Generator Cooling	Oil Cooling/Continuous	Oil Cooling/Continuous
Film Security	Standard of ASA/ISO1600	Standard of ASA/ISO1600
X-Ray Leakage	Less than 1 Sv/hour (5 cm from the housing)	Less than 1 Sv/hour (5 cm from the housing)
Conveyor Height	672 mm	672 mm
Speed	0.22 m/s	0.22 m/s, 0.32 m/s adjustable
Sensor Type	1/2.7" Progressive Scan CMOS	1/2.7" Progressive Scan CMOS
Camera	2 ch	2 ch
Video Compression Standard	H.265/H.264/MJPEG	H.265/H.264/MJPEG
Max. Image Size	1920 × 1080	1920 × 1080
Frame Rate	50 Hz: 25 fps (1920 × 1080, 1536 × 864, 1280 × 720) 60 Hz: 30 fps (1920 × 1080, 1080 × 960, 1280 × 720)	50 Hz: 25 fps (1920 × 1080, 1536 × 864, 1280 × 720) 60 Hz: 30 fps (1920 × 1080, 1080 × 960, 1280 × 720)
Storage Time	≥ 30 days	≥ 30 days
AI Identification Items	/	41 classes in 15 major types
Login Method	Fingerprint/Password	Fingerprint/Password
Screen Size	21.5", Single Screen, 1920 × 1080	21.5", Single Screen, 1920 × 1080
Consumption	< 0.5 KVA	< 0.56 KVA
Power	220 VAC (±10%), 50 ± 3 Hz	220 VAC (±10%), 50 ± 3 Hz
Operating Humidity	10% to 95% (No Condensation)	10% to 95% (No Condensation)
Operating Temperature	5 °C to 45 °C	5 °C to 45 °C
Weight	300 kg	340 kg



6550 series

- *Single view*
- *Dual view*



Maximum Performance

- Detects 41 classes and 15 major types of prohibited items
- 21.5-inch dual-view display delivers high-quality, multi-angle images at the same time
- 4-camera video monitoring in real time helps with event tracing
- Variable speed adjustable (0.2m/s, 0.3m/s, 0.4m/s) for flexible pass-through speeds in different scenarios
- Double lead-curtain design effectively keeps surrounding staff and other personnel safe from radiation

Ease-of-use

- Code / fingerprint / facial access (optional) to quickly log in and start up
- Flat, 0.6 m carrier table at exit (included) and 1.2 m carrier table at entrance (included) for rapid pass-through of carry-on bags
- 4-camera video monitoring in real time helps with event tracing

Application Scenarios

Stadiums



Government agencies



Prisons



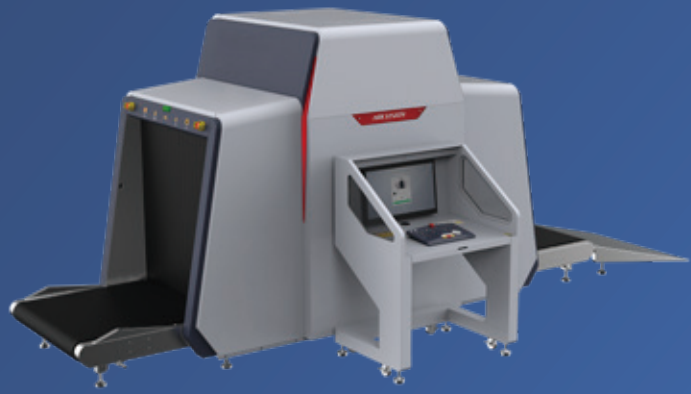
More
...

Model	ISD-SC6550S-4CVL Single-view	ISD-SC6550D-4CVL Dual-view
Image		
Tunnel Size	650 mm (W) × 500 mm (H)	650 mm (W) × 500 mm (H)
Dimensions	2127 mm × 989 mm × 1351 mm (L x W x H)	2454 mm × 1419 mm × 1376 mm (L x W x H)
Operation Desk Size	850 mm × 700 mm × 1200 mm (L x W x H)	1200 mm × 700 mm × 1142 mm (L x W x H)
Wire Resolution	36 AWG standard, 38 AWG typical	36 AWG standard, 38 AWG typical
Steel Penetration	30 mm standard, 34 mm typical	30 mm standard, 34 mm typical
Spatial Resolution	1.0 mm (Horizontal & vertical)	Bottom Angle of View: 1.0 mm (Horizontal & vertical) Side Angle of View: 1.0 mm (Horizontal & vertical)
X-Ray Generator	160 kV, 1.2 mA (Adjustable)	160 kV, 1.2 mA (Adjustable)
Generator Cooling	Oil Cooling/Continuous	Oil Cooling/Continuous
Film Security	Standard of ASA/ISO1600	Standard of ASA/ISO1600
X-Ray Leakage	Less than 1 Sv/hour (5 cm from the housing)	Less than 1 Sv/hour (5 cm from the housing)
Conveyor Height	678 mm	678 mm
Speed	0.2 m/s, 0.3 m/s, 0.4 m/s adjustable	0.2 m/s, 0.3 m/s, 0.4 m/s adjustable
Sensor Type	1/2.7" Progressive Scan CMOS	1/2.7" Progressive Scan CMOS
Camera	4 ch	4 ch
Video Compression Standard	H.265/H.264/MJPEG	H.265/H.264/MJPEG
Max. Image Size	1920 × 1080	1920 × 1080
Frame Rate	50 Hz: 25 fps (1920 × 1080, 1536 × 864, 1280 × 720) 60 Hz: 30 fps (1920 × 1080, 1080 × 960, 1280 × 720)	50 Hz: 25 fps (1920 × 1080, 1536 × 864, 1280 × 720) 60 Hz: 30 fps (1920 × 1080, 1080 × 960, 1280 × 720)
Storage Time	≥ 30 days	≥ 30 days
AI Identification Items	41 classes in 15 major types	41 classes in 15 major types
Login Method	Fingerprint/Password	Fingerprint/Password
Screen Size	21.5", Single Screen, 1920 × 1080	21.5", Dual Screen, 1920 × 1080
Consumption	< 0.8 KVA	< 1 KVA
Power	220 VAC (±10%), 50±3 Hz	220 VAC (±10%), 50±3 Hz
Operating Humidity	10% to 95% (No Condensation)	10% to 95% (No Condensation)
Operating Temperature	5 °C to 45 °C	5 °C to 45 °C
Weight	600 kg	800 kg



100100 series

- *Single view*
- *Dual view*



Maximum Performance

- Detects 41 classes and 15 major types of prohibited items
- 21.5-inch dual-view display delivers high-quality, multi-angle images at the same time
- 4-camera video monitoring in real time helps with event tracing
- Variable speed adjustable (0.2 - 0.42 m/s) for flexible pass-through speeds in different scenarios
- Double lead-curtain design effectively keeps surrounding staff and other personnel safe from radiation

Ease-of-use

- Code / fingerprint / facial access (optional) to quickly log in and start up
- 1.0 m flat carrier tables at exit and entrance (optional) for rapid pass-through of heavy baggage and cargo
- Quick operation with an embedded operator training system

Application Scenarios

Transport hubs



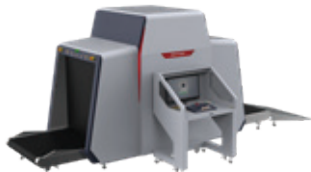
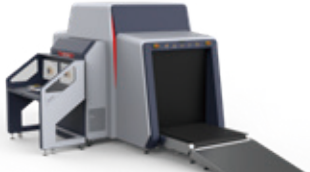
Logistics industries



Ports



More
...

Model	ISD-SC100100S-4CVL Single-view	ISD-SC100100D-4CVL Dual-view
Image		
Tunnel Size	1000 mm (W) × 1000 mm (H)	1000 mm (W) × 1000 mm (H)
Dimensions	3592 mm × 1360 mm × 1894 mm (L x W x H)	4242 mm × 1800 mm × 1893 mm (L x W x H)
Operation Desk Size	850 mm × 700 mm × 1200 mm (L x W x H)	1200 mm × 700 mm × 1142 mm (L x W x H)
Wire Resolution	34 AWG standard, 36 AWG typical	34 AWG standard, 36 AWG typical
Steel Penetration	30 mm standard, 32 mm typical	30 mm standard, 32 mm typical
Spatial Resolution	1.3 mm (Horizontal & vertical typical)	Bottom Angle of View: 1.3 mm (Horizontal & vertical) Side Angle of View: 1.0 mm (Horizontal & vertical)
X-Ray Generator	160 kV, 1.2 mA (Adjustable)	160 kV, 1.2 mA (Adjustable)
Generator Cooling	Oil Cooling/Continuous	Oil Cooling/Continuous
Film Security	Standard of ASA/ISO1600	Standard of ASA/ISO1600
X-Ray Leakage	Less than 1 Sv/hour (5 cm from the housing)	Less than 1 Sv/hour (5 cm from the housing)
Conveyor Height	300 mm	300 mm
Speed	0.2 m/s, 0.3 m/s, 0.4 m/s adjustable	0.2 m/s, 0.3 m/s, 0.4 m/s adjustable
Sensor Type	1/2.7" Progressive Scan CMOS	1/2.7" Progressive Scan CMOS
Camera	4 ch	4 ch
Video Compression Standard	H.265/H.264/MJPEG	H.265/H.264/MJPEG
Max. Image Size	1920 × 1080	1920 × 1080
Frame Rate	50 Hz: 25 fps (1920 × 1080, 1536 × 864, 1280 × 720) 60 Hz: 30 fps (1920 × 1080, 1080 × 960, 1280 × 720)	50 Hz: 25 fps (1920 × 1080, 1536 × 864, 1280 × 720) 60 Hz: 30 fps (1920 × 1080, 1080 × 960, 1280 × 720)
Storage Time	≥ 30 days	≥ 30 days
AI Identification Items	41 classes in 15 major types	41 classes in 15 major types
Login Method	Fingerprint/Password	Fingerprint/Password
Screen Size	21.5", Single Screen, 1920 × 1080	21.5", Single Screen, 1920 × 1080
Consumption	< 0.8 KVA	< 1.5 KVA
Power	220 VAC (±10%), 50±3 Hz	220 VAC (±10%), 50±3 Hz
Operating Humidity	10% to 95% (No Condensation)	10% to 95% (No Condensation)
Operating Temperature	5 °C to 45 °C	5 °C to 45 °C
Weight	1350 kg	1500 kg